

LOCALLY LED DEVELOPMENT

At FHI 360, **locally led development (LLD) principles** are a core element of our ambition and underlie our vision and actions. Our organization and division are committed to working *hand in hand with our local partners and stakeholders* to achieve sustainable success. Below are a few examples of how we have begun cultivating the practice of integrating LLD in our projects and program implementation.

LLD is the process in which local actors set their own agendas, develop solutions, and bring the capacity, leadership, and resources to make those solutions a reality. Local leadership and ownership are essential to fostering sustainable results across development and humanitarian assistance work.

Enhancing Global Health Security: Burkina Faso - We partnered with the *Ministry of Health* to develop SOPs for public health emergency notification of potential international concerns/zoonosis using a One Health Approach.

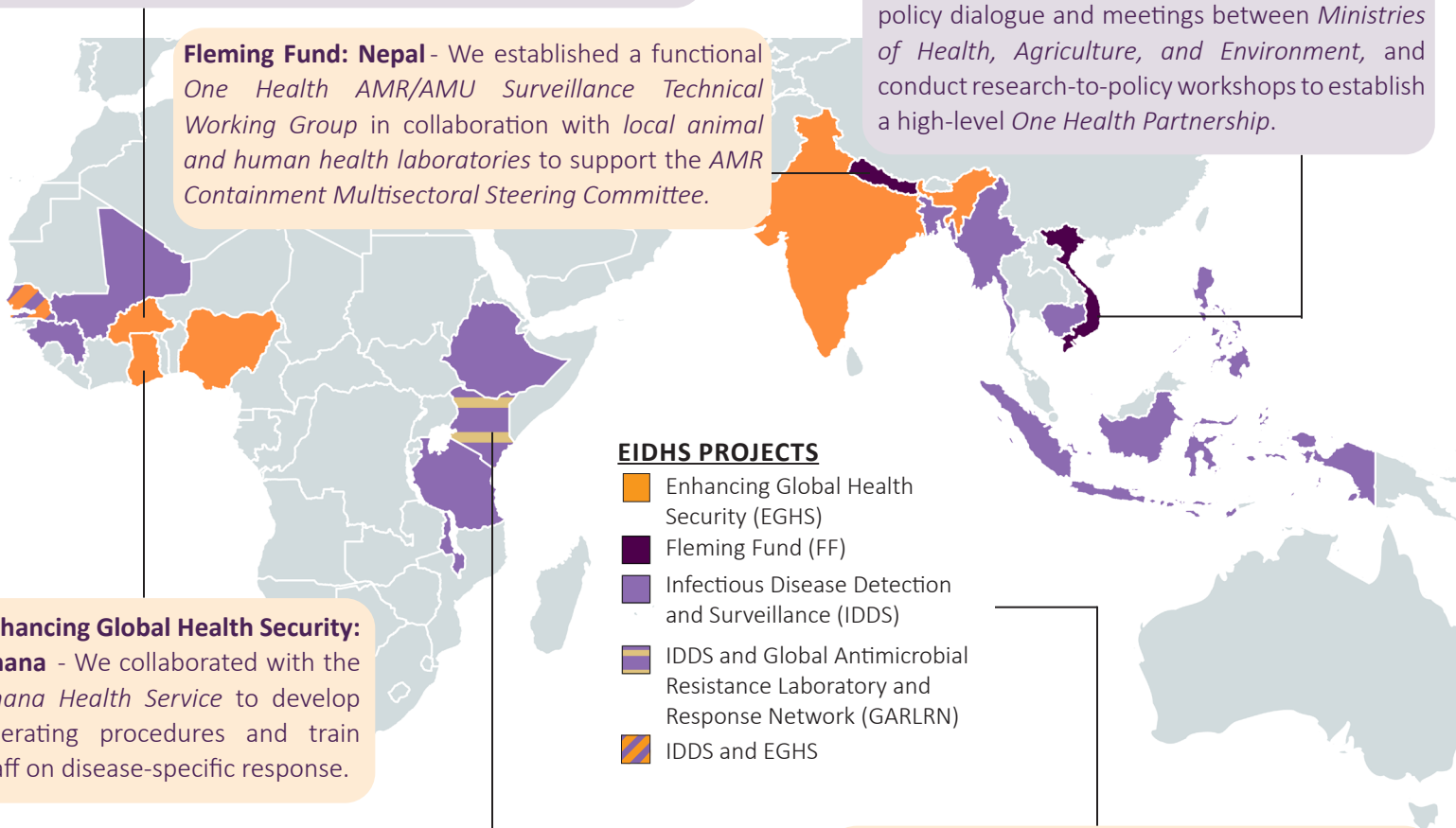
Fleming Fund: Vietnam - We coordinated technical resources to support the *government of Vietnam* to develop and implement evidence-based policies, to facilitate multisectoral high-level policy dialogue and meetings between *Ministries of Health, Agriculture, and Environment*, and conduct research-to-policy workshops to establish a high-level *One Health Partnership*.

Fleming Fund: Nepal - We established a functional *One Health AMR/AMU Surveillance Technical Working Group* in collaboration with *local animal and human health laboratories* to support the *AMR Containment Multisectoral Steering Committee*.

Enhancing Global Health Security: Ghana - We collaborated with the *Ghana Health Service* to develop operating procedures and train staff on disease-specific response.

Global Antimicrobial Resistance Laboratory and Response Network: Kenya - We are supporting the *Ministry of Health and other partners in Kenya* to support a phased approach to build and strengthen a sustainable network of environmental microbiology laboratories to detect antimicrobial resistant (AMR) *E. coli* as part of active environmental surveillance.

Infectious Disease Detection and Surveillance - We are building *national and subnational* capacities to improve diagnostic networks and surveillance to combat AMR across Africa and Asia, including the development of national strategic plans, policies, and guidance documents.



Take the lead! For more information or ways that we can partner with you, reach out for a customized consultation with our team.

CONTACT: Janet Robinson, Director | JRobinson@fhi360.org | (919) 638 - 7998